

P2 Store operation guide



April, 2006

Alliance Development team
Professional AV Systems B.U.
Panasonic AVC Networks Company

1. Power On

1) After supply AC power or Battery, slide knob to open panel



2) Press Power key to boot up.



All LED flash two times, then power LED blink 10 seconds during boot up hard disk. After hard disk is ready, Power LED turns to ON.



2. Copy material from P2card to HDD (Hard Disk Drive)

1) Check remaining HDD capacity.



Five LEDs indicate remaining disk capacity when press "HDD CAP." key.

2) Check remaining battery power



By pressing left side key, LEDs indicate remaining power of battery. We recommend full charges before use.

When battery power is low, Red Blinking is started on E2 LED, also Red light is on at the front panel. In this case, power off and change battery, or supply AC power.



3) Insert P2card into the slot.



4) Copy P2card material into HDD.



Press START key more than two seconds.





Orange lights is ON at “P2C > HDD” and copy progress is indicated by five green LED from 20% to 100%.



If shock is detected during copy process, hold writing in order to avoid disk corruption.



During protect disk, LED “E4” is turned to Orange. When shock or vibration is stopped, orange light is turned off, and start writing again in a few seconds.



Copy process is finished when copy status LEDs are all ON.



Press Power Key to end process.

* No Key is functioned before pressing Power key.



Copy is done when COPY STATUS LEDs are all off.

3. HDD storage space segmentation



Area 01	4 GB
Area 02	4 GB
Area 03	4 GB
Area 04	4 GB
Area 05	4 GB
Area 06	4 GB
Area 07	4 GB
Area 08	4 GB
Area 09	4 GB
Area 10	4 GB
Area 11	4 GB
Area 12	4 GB
Area 13	4 GB
Area 14	4 GB
Area 15	4 GB

Hard disk is partitioned 15 areas in order to get faster transfer.

Each partition is reserved 4GB space, so **it is always consumed 4GB space even very small amount of data is copied.**

When 8GB P2card is inserted, two partitioned areas are reserved, so **it is always consumed 8GB space even very small amount data is copied.**

Note: After copy is done, P2 store is not able to delete specific partitioned area.

4. Remove P2card



Press Eject button once. The knob is come out, then press Eject button again, P2card is ejected.

5. Formatting P2card

- 1) Press "P2C" key more than two seconds.



Format P2card for erase all material. COPY STATUS LED is blinking at orange by pressing "P2C" key more than two seconds.

- 2) Hit START key during Orange LED is blinking



P2card formatting is started when hit START key during orange LEDs are blinking. Format is finished when LEDs turn off.

6. Formatting HDD

- 1.) Insert sharp object into hall indicated 'HDD'



Formatting disk is required in order to erase data in HDD. Orange LEDs at COPY STATUS start blinking when insert sharp object, such as ball point pen, into hall more than two seconds.

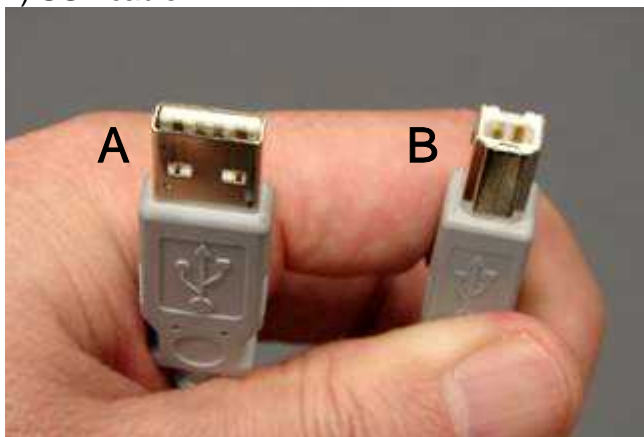
2) Hit START key during orange LEDs , COPY STATUS, are blinking.



Formatting HDD is started by hitting START key during orange LEDs , COPY STATUS, are blinking. Formatting is finished when LEDs are turned off.

7. Connecting with Windows PC

1) USB cable



Use typical USB cable which has A and B connectors such as left picture.

2.) Insert Connector B into right hand side of P2-Store.





AC adaptor is recommended when operating with PC in order to avoid accidental shut down.

3.) Insert Connector A into USB port in PC

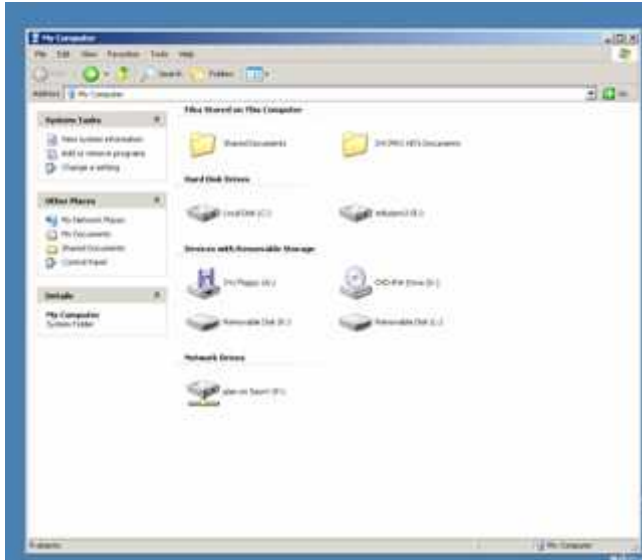


After connecting to PC, USB LED is turned ON at green when press power key in the P2-Store.

* If color is orange, it required change mode. Please refer section 9, Connecting with Mac.



When P2-Store is mounted by PC, device window is appeared. Click cancel to close.



Drive Icon is displayed when P2 Store is mounted successfully.

After mounded, it can access material with P2viewer software. Or it can access material with Avid or Canopus Editing software.

Note: It cannot copy material from P2card to P2-Store's HDD during connecting with PC. Please disconnect P2-store from PC.

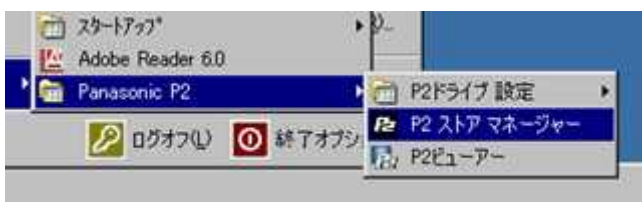
Note: P2-Store is designed for copy data from P2card, not able to copy data from PC or Mac.
 Note; P2-Store does not have capability of stream data out.

8. P2-Store Manager (There is no Mac version at this moment.)

1) Connect P2-Store and PC with USB cable



P2-Store Manager is application software for status display of P2-Store.



Select P2 Store Manager from Windows Start >> All Program >> Panasonic P2 >> P2 Store Manager.

2.) Launch P2 Store Manager

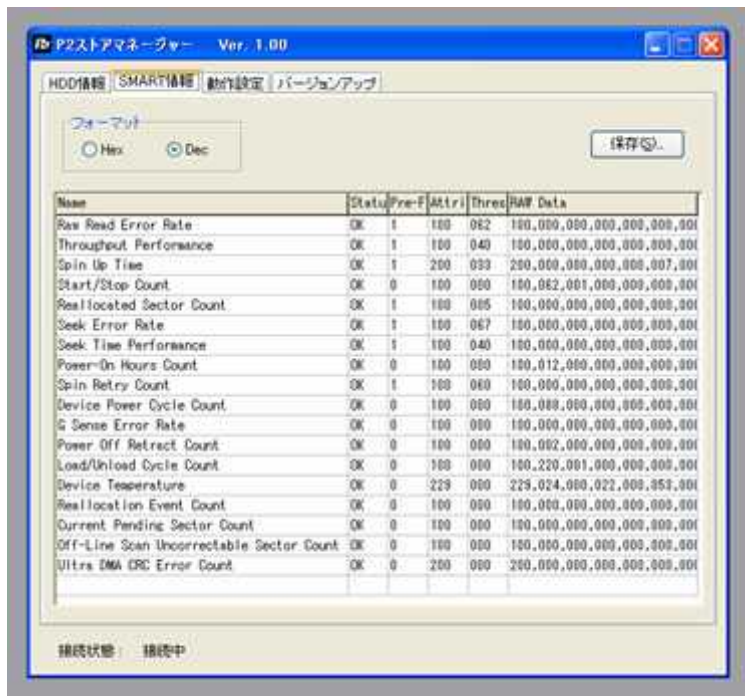


HDD page shows copied data information for each partition area.

Status shows 'OK' when copy is finished correctly. 'ERROR' when accident is happened during the copy.

Quick Format button in Erase Data area, all data in P2-store is erased.

Accumulated time in Maintenance area is showed total hours of P2-Store. We recommend maintenance service every 2000 hours.



To make sure hard disk conditions, S.M.A.R.T. (Self Monitoring Analysis and Reporting Technology) information is useful.

If NG is displayed in Status, it is required to service maintenance.

Pre-Failure / Advisory is indicated priority of each item. "1" means priority high. If you find NG and priority high, hard disk has serious problem. We strongly recommend to check service maintenance immediately.



Setting can change each items. We recommend to use default setting. It is user responsibility to change setting other than default.



This page shows firmware version and handle upgrade.

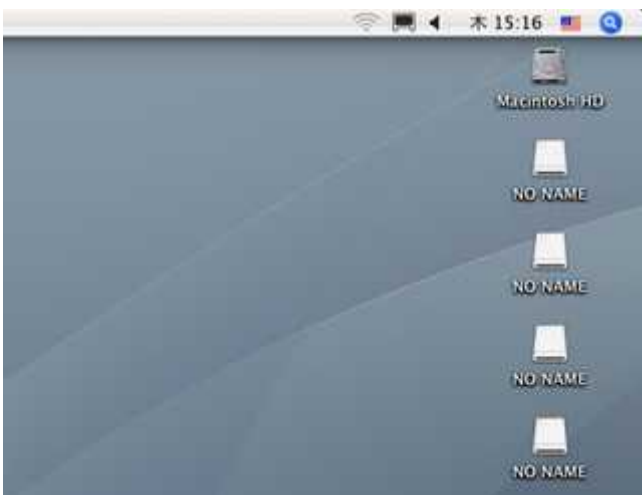
9. Connecting with Mac



To recognize P2 Store into Mac,
Boot up Mac and P2-Store and
connect with USB cable.



Press continuously both side of keys in
STATUS area and Cancel key
simultaneously until USB LED is
turned to Orange. Set up is done
when USB LED is turned to orange.



After P2-Store is mounted with Mac,
Icons 'No Name' are appeared.

**Note: It cannot copy P2card to
internal Hard disk during connected
with PC. Please disconnect
P2-store from Mac.**

Mac mode is memorized even if power is off.
To make Windows mode, press same three keys until USB
LED is turned to Green.



Reference data of transfer speed.

* Example 4GB P2card.

4 GB P2 Card	1080i 60i	14 Clip	4' 10"
↓	6' 03" at Verify ON		
	2' 38" at Verify OFF		
P2 Store internal Disk			

* Example 8GB P2 card.

8 GB P2 Card	1080i 60i	20 Clip	8' 38"
↓	12' 12" at Verify ON		
	5' 30" at Verify OFF		
P2 Store internal Disk			



What is VERIFY ON

During copy process all data which has stored in hard disk has read and verify with original data in P2card.

To get further reliability, we recommend 'Verify ON'. However it takes more than double duration compared to 'Verify OFF'.