
Operation Manual

ParaBeam[®] 400 Select

ParaBeam[®] 200



ParaBeam 400 Select



ParaBeam 200



KINO FLO[®]
Lighting Systems

ParaBeam Assembly and Features



KIT-P4-S120

ParaBeam 400 DMX Kit, 120VAC

KIT-P4-S230

ParaBeam 400 DMX Kit, 230VAC

Kit Contents:

- 1 ParaBeam 400 DMX
- 1 Lamp Case
- 1 Ship Case

Dimensions

30 x 12.5 x 30.5"
(76 x 32 x 77.5cm)

Weight

61lb (27.5kg)



KIT-P2-120

ParaBeam 200 DMX Kit, 120VAC

KIT-P2-230

ParaBeam 200 DMX Kit, 230VAC

Kit Contents:

- 1 ParaBeam 200 DMX
- 1 Lamp Case
- 1 Ship Case

Dimensions

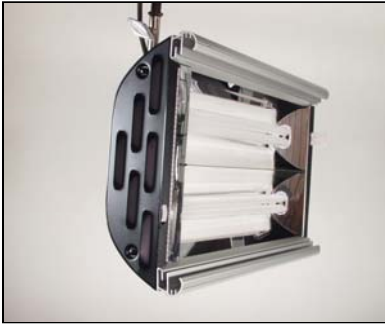
35.5 x 12 x 23"
(90 x 30.5 x 58.5cm)

Weight

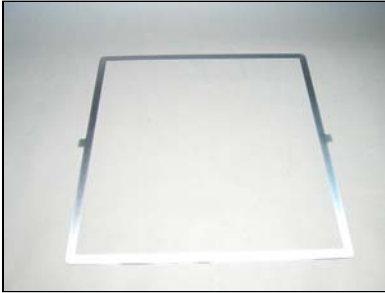
45lb (20.3kg)



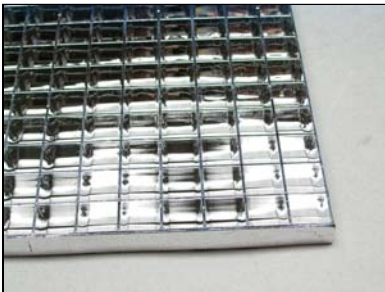
PAR-400-S120.....ParaBeam 400 Select,
120 VAC
PAR-400-S230.....ParaBeam 400 Select,
230 VAC



PAR-200-120.....ParaBeam 200, 120VAC
PAR-200-230.....ParaBeam 200, 230VAC



GFR-P4.....ParaBeam 400 Gel Frame
GFR-P2.....ParaBeam 200 Gel Frame



LVR-P4-S.....ParaBeam 400 Silver Louver
LVR-P2-S.....ParaBeam 200 Silver Louver

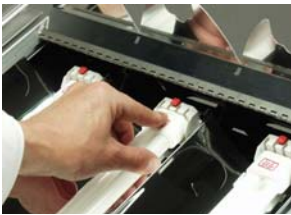
Inserting Lamps



Open hinged reflector door.



Insert lamp end first.



Snap lamp pins into Lamp holder.



Close reflector door.



To release lamps, press Red button and lift lamp out.

Inserting Louvers, Diffusers or Gel Frame



Push tab down and forward to lock into open position.



Insert gel frame and diffuser (optional accessory) into channel closest to lamps.

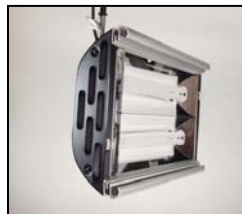
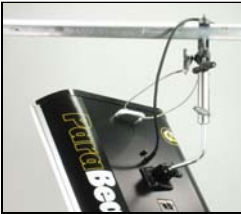


Silver Louver fits into front channel.



All 4 retaining tabs must be extended to lock accessories in place.

Mounting Procedure



The **ParaBeam 400** hangs from a grid by a Junior pipe hanger or mounts on a Junior Stand.

Note: Loop the safety chain through the handle on the ParaBeam 400.

The **ParaBeam 200** hangs from a grid by a baby pipe hanger or mounts on a baby stand.



A 180 degree turn is all that is required to loosen the mount for orientation.



To adjust the tension on the lock lever, pull handle away from mount. This disengages the handle from the screw mechanism and allows the lever to be reoriented. You can also use a screwdriver to adjust the tension. Pull back on handle and adjust screw.

Beam Angle Orientation



Vertical beam angle



Horizontal beam angle

Correct Lamp Orientation



VERTICAL MODE:

Follow the principle of **lamp base up and lamp tip down**. This orientation keeps the mercury away from the cathodes and provides best color temperature stability and best color rendering.

DO NOT operate fixtures with lamp base in the down position. Color can diverge up to 400K and will get very green.

HORIZONTAL MODE:

Even in the horizontal position a slight rotation favoring the lamp tips (lamp base higher than the lamp tip) will allow for better color temperature stability.

Note:

When looking at the back of the fixture the Kino Flo Logo should read:



If the Logo is upside down, the fixture does not have the correct orientation.



Fixture Operation

Warning! To Ensure Proper Operation

ALWAYS TURN **OFF** THE FIXTURE BEFORE connecting or disconnecting lamps. After the lamps are properly installed, the Ballast can be turned on. Avoid operating in temperatures above 125°F (51°C) or below 60°F (15°C).

In temperatures below 60°F or 15°C the ballast may take longer to strike. If lamp does not strike within 5 seconds, switch the ballast to OFF, and try again. Check that the lamps are properly seated and the dimmer is up full, then restrike. If temperatures are too low, try to warm up the fixture to at least 60°F. Lamps will turn on at preset dimmer settings as long as the temperature is above 60°F or 15°C.

ParaBeam 400 Select Control Panel

DMX / MANUAL Lamp Select:

Sets the fixture for 2 or 4 lamp operation.

DMX Address:

Sets DMX address of Fixture.

DMX Indicator:

Lights if valid DMX signal is present.

Remote Dimmer Jack:

Hand held dimmer control input jack



DMX-In & DMX-Out:

DMX-in receives DMX signals from Dimmer Board. DMX-Out relays DMX signal through to other fixtures or Instruments.

End of Line:

Terminates DMX signal at the end of Fixture series.

Dimmer Control:

Rotary dimming control

Power Switch:

Turns fixture on and off.

Manual Operation



The on-board dimmer dial can manually dim lamps.

The REMOTE DIM jack enables the use of a handheld remote control dimmer (Part # DIM 5, Hand Held Dimmer).



The **MANUAL LAMPS DIM** switch selects 2 or 4 lamp operation. In the **2** setting the center two lamps are dimmed. In the **4** setting all four lamps are dimmed.

Note: All manual controls are disabled as soon as the DMX cable is applied. For Manual control with DMX cables plugged in, set address to "000". There is a 5 second delay when switching between DMX and Manual control.

DMX Operation



DMX Addressing

Prior to hanging any instruments set the DMX address of each Fixture.

Push the tabs above or below the number window to set the address. (Valid addresses range from 001 to 512.) The light above the address block will illuminate if a DMX signal is present.



The **DMX DIM CHANNELS** feature allows user to select two sets of lamps for DMX dimming control.

The **ParaBeam 400 Select** operates on one or two DMX addresses.

Position 1 requires one DMX address and renders control of all four lamps on one dimmer channel.

Position 2 requires two DMX addresses to control 4 lamps on two addresses and two dimmer channels. The 1st address controls the **inner two** lamps. The 2nd address controls the **outer two** lamps.

Tip: Position 2 allows for a greater degree of control. The board operator can turn two lamps off (1 f-stop drop in exposure) without shifting the color temperature.



The **ParaBeam 200** operates on one address per fixture. Two lamps are dimmed on one dimmer channel.



The **END OF LINE** switch must be set to open (**O**) on Fixtures within the DMX chain.

Set to **END OF LINE** when the Fixture is the last DMX control device in the chain.

Note: When the last Fixture's DMX Term is set to "END OF LINE," it will absorb all energy in the DMX line, ensuring DMX signals are transmitted correctly. If a signal is not terminated, it is called a "Reflected Wave," and may create transmission errors by causing valid DMX signals to be canceled.



ParaBeam Fixtures can be jumpered using the IN and OUT ports. As many as 100 Fixtures can be jumpered on one chain as long as the DMX cable run remains under 1000 feet or 40 x 25ft DMX cables.

Note: When operating Fixtures at great distances from the dimmer board, it is recommended to use Opto-Isolators to provide DMX signal amplification.

NOTE: If a Fixture or Ballast loses its DMX signal it will hold its last DMX command. For this reason it is important to turn a Fixture or Ballast off using the DMX commands. For example, if you try to turn off the lights by turning off the dimmer board the lights will remember their last DMX command and stay on. The Fixtures or Ballasts require a DMX "Off" or "Black-out" command in order to turn off.

Trouble Shooting

LAMPS FAIL TO LIGHT:

- With the power switch in the **ON** position, the red light should be on. If it is not, Voltage is not present. Check your power feed. Check the fuse on the fixture and replace if necessary (*5 x 20mm, T3.15AH/250V, Time Delay Type*)
- The on board manual dimmer should be full up, turned completely clockwise.
- Check lamp contact. Lamps must be properly seated. If one lamp is not making contact or is burned out, two lamps will be off.
- Replace lamp or lamps.
- Check ballast contact. Make sure ballast is properly seated; lock tab must be locked in place (see **checking ballast** notes).
- After having checked that lamps and ballasts are correctly seated, turn off power to the fixture for 60 seconds and restart.
- Replace ballast card with one that is known to work.
- With DMX cable connected, if yellow light is off, there is no DMX signal. Establish a valid DMX signal.
- With DMX cable plugged in and yellow indicator on:
 1. Address must be between 001 and 512. Addresses above 512 are invalid.
 2. The dimmer setting on lighting board must in the full up mode.
 3. The last fixture must have the DMX termination switch set to **END of LINE**. Numerous terminated fixtures on a DMX run will result in DMX signal corruption.

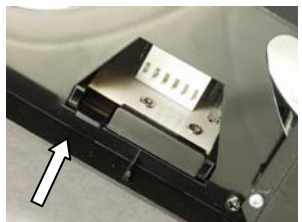
CHECKING BALLAST:



Pull out 3 white push-pins.



Remove end cover with white push-pins.



Push up lock tab and pull out ballast card.



The ballast is mounted to a circuit board with end contacts to allow for rapid ballast replacement without the use of additional tools.

Lock tab must be locked for proper ballast contact.

Accessories



BRD-P4... ParaBeam 400
Barn Doors (set of 4)
BRD-P2... ParaBeam 200
Barn Doors (set of 4)



DFS-P4.....ParaBeam 400
Diffuser
DFS-P2.....ParaBeam 200
Diffuser



DIM-5... Hand Held remote
dimmer with 15'
dimming cable



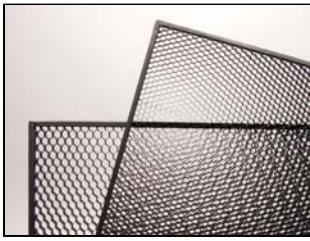
KAS-P41... ParaBeam 400
KAS-P21... ParaBeam 200



KAS-CL6 6 x 55W Lamp
Carrying Case

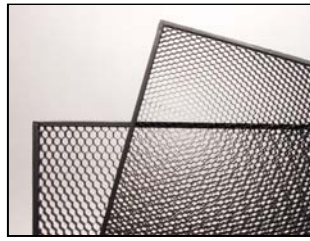


MTP-LMT Mega Lollipop
Straight w/
Junior Pin



ParaBeam 400 Honeycomb Louvers

LVR-P445.... 45 degree spot
LVR-P460.... 60 degree spot
LVR-P490..... 90 degree spot



ParaBeam 200 Honeycomb Louvers

LVR-P245.....45 degree spot
LVR-P260.....60 degree spot
LVR-P290.....90 degree spot

Mounting Barn Doors

SIDE DOORS



First apply Side Doors by inserting the hinge bracket into the extruded edge. Lock the bracket by turning the silver thumbscrew.

TOP & BOTTOM DOORS



Position the Top and Bottom Doors to allow for sufficient movement.

HINGE TENSION ADJUSTMENT



Top & Bottom Door



Side Door

Hinge tension on Top & Bottom Doors is adjusted by tightening the nut.

Use a screwdriver to adjust the Side Doors

Fixture Specifications



Model: PAR-400S
ParaBeam 400 Select

Power requirements: 120VAC or 230VAC

Amperage: 2 amps at 120VAC
1.1 amps at 230VAC

Weight: with lamps, louver and diffuser
24.2 lbs / 10.9 Kg

Dimensions: 24.5 x 24 x 8"
(62 x 61 x 20.5cm)

Lamp types: 55 watt compact fluorescent lamps
with 2G11 base

Switching: 2 lamp and 4 lamp on/off
Manual and DMX dimming



Model: PAR-200

ParaBeam 200

Power requirements: 120VAC or 230VAC

Amperage: 1.1 amps at 120VAC

0.6 amps at 230VAC

Weight: with lamps, louver and diffuser

16.5 lbs / 7.4 Kg

Dimensions: 24.5 x 13.5 x 7.5"

(62 x 34.5 x 19cm)

Lamp types: 55 watt compact fluorescent lamps
with 2G11 base

Switching: 2 lamps on/off
Manual and DMX dimming

Environmental: Disposal of Old Electrical & Electronic Equipment.



This symbol on the product or on its packaging indicates that this product shall not be treated as household waste. This product is made of recyclable materials and should be disposed of in accordance with local and state regulations.

Kino Flo, Inc. 2840 N. Hollywood Way, Burbank, CA 91505, USA
Tel: 818 767-6528 website: www.kinoflo.com